

THE BEST PATTERNING SOLUTION FOR MARINE FABRICATORS

AUTOMETRIX
PRECISION CUTTING SOLUTIONS

1. MEASURING

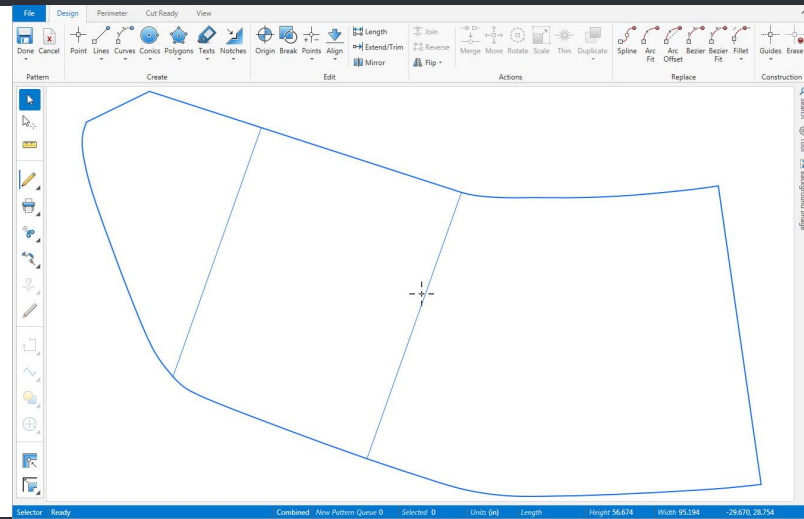
No matter your measuring tools, the result is a flat pattern

TRADITIONAL → 2D DIGITIZING

3D DIGITIZING

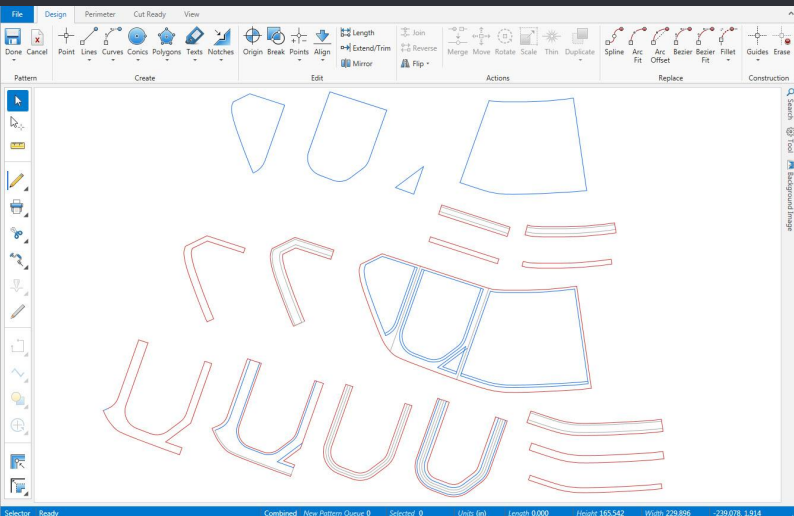
↓
SURFACING

↓
FLATTENING



2. PATTERN LAYOUT

Use PatternSmith software to develop the detailed patterns



REFINE GEOMETRY

↓
COPY & OFFSET GEOMETRY

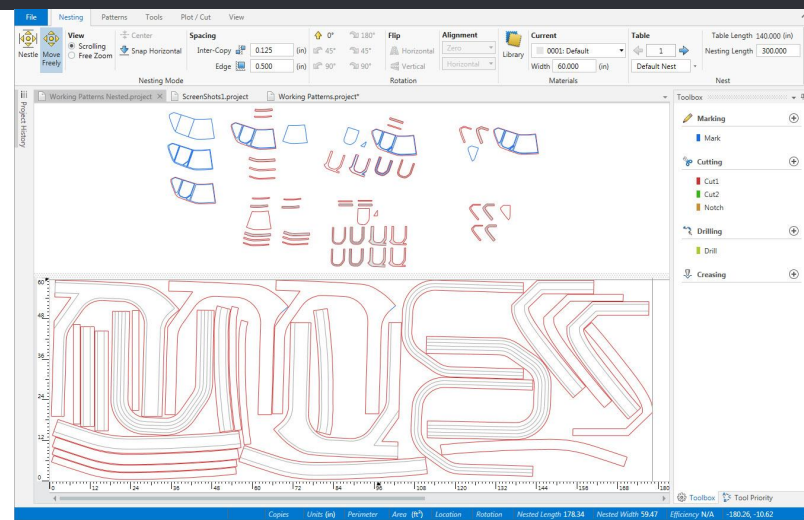
↓
SEAM ALLOWANCES & NOTCHES

3. CUTTING

PatternSmith allows for quick, visual nesting layout and send it to a cutter with a click!

NEST FOR EFFICIENCY

↓
SEND FILE TO CUTTER

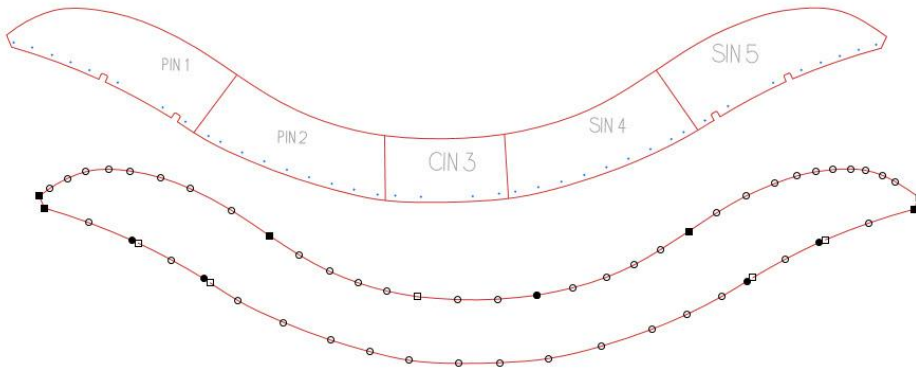


A CLOSER LOOK AT PATTERNSMITH



If you're choosing to pattern with plastic, start with CADShot or CADShot Mobile to quickly capture a scaled picture of your pattern. Then, simply use PatternSmith to trace the pattern, referencing any written notes that will show up in your photo. It's that easy to have a digital flat pattern - a pattern easy to save for next time your customer calls!

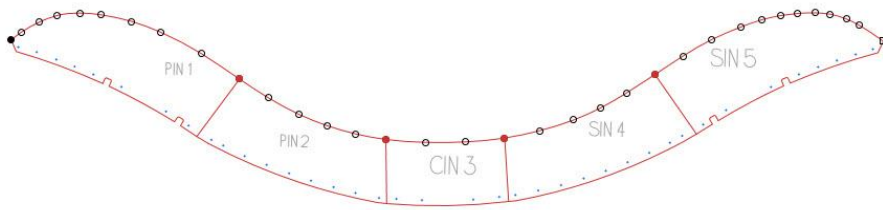
DUPLICATE ORIGINAL FLAT PATTERN



As a canvas designer, you use the same curves and lines from your original flat pattern many times.

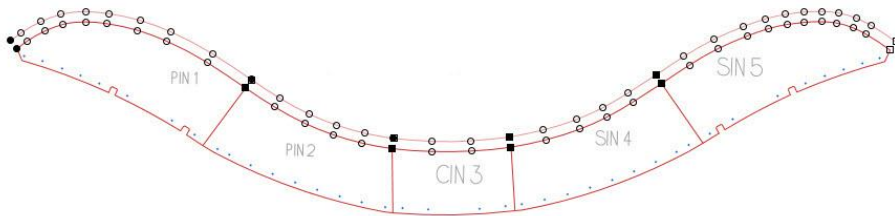
In PatternSmith, use intuitive copy and paste tools to duplicate the original measured flat pattern as many times as necessary.

DIVIDE INTO PANELS



Whether you digitize your flat patterns as individual panels or not, it won't matter - use the "Break" tool to quickly split the shapes into the panels you'll fabricate.

OFFSET GEOMETRY FOR PATTERNS



Finally, select user-defined offset values to quickly create patterns for windows and canvas panels, accounting for zippers, keder, and other pattern details.